

CRESCENTNOBHILL.COM

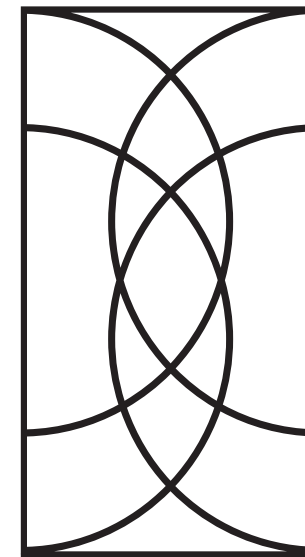


GROSVENOR



FLOOR PLANS ARE DRAWN TO VARYING SCALES TO MAXIMIZE VISIBILITY WHEN PRINTED. THE FLOOR PLANS, ELEVATIONS, RENDERINGS, FEATURES, FINISHES AND SPECIFICATIONS ARE SUBJECT TO CHANGE AT ANY TIME. SQUARE FOOTAGE OR FLOOR AREAS SHOWN IN ANY MARKETING OR OTHER MATERIALS IS APPROXIMATE AND MAY BE MORE OR LESS THAN THE ACTUAL SIZE. THESE MATERIALS SHOULD NOT BE RELIED UPON AS REPRESENTATIONS, EXPRESS OR IMPLIED. THE DEVELOPER RESERVES THE RIGHT TO CHANGE FLOOR PLANS, ELEVATIONS, FEATURES, FINISHES AND SPECIFICATIONS AT ANY TIME, WITHOUT PRIOR NOTICE. REAL ESTATE CONSULTING, SALES AND MARKETING BY POLARIS PACIFIC - A LICENSED CALIFORNIA, ARIZONA, COLORADO, HAWAII, OREGON AND WASHINGTON BROKER - CA DRE #01499250

**POLARIS  
PACIFIC**

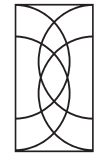


---

## RESIDENCE 704

2 BEDROOMS | LIBRARY | 2 BATHROOMS

INTERIOR 1,576 SQ FT  
EXTERIOR 141 SQ FT



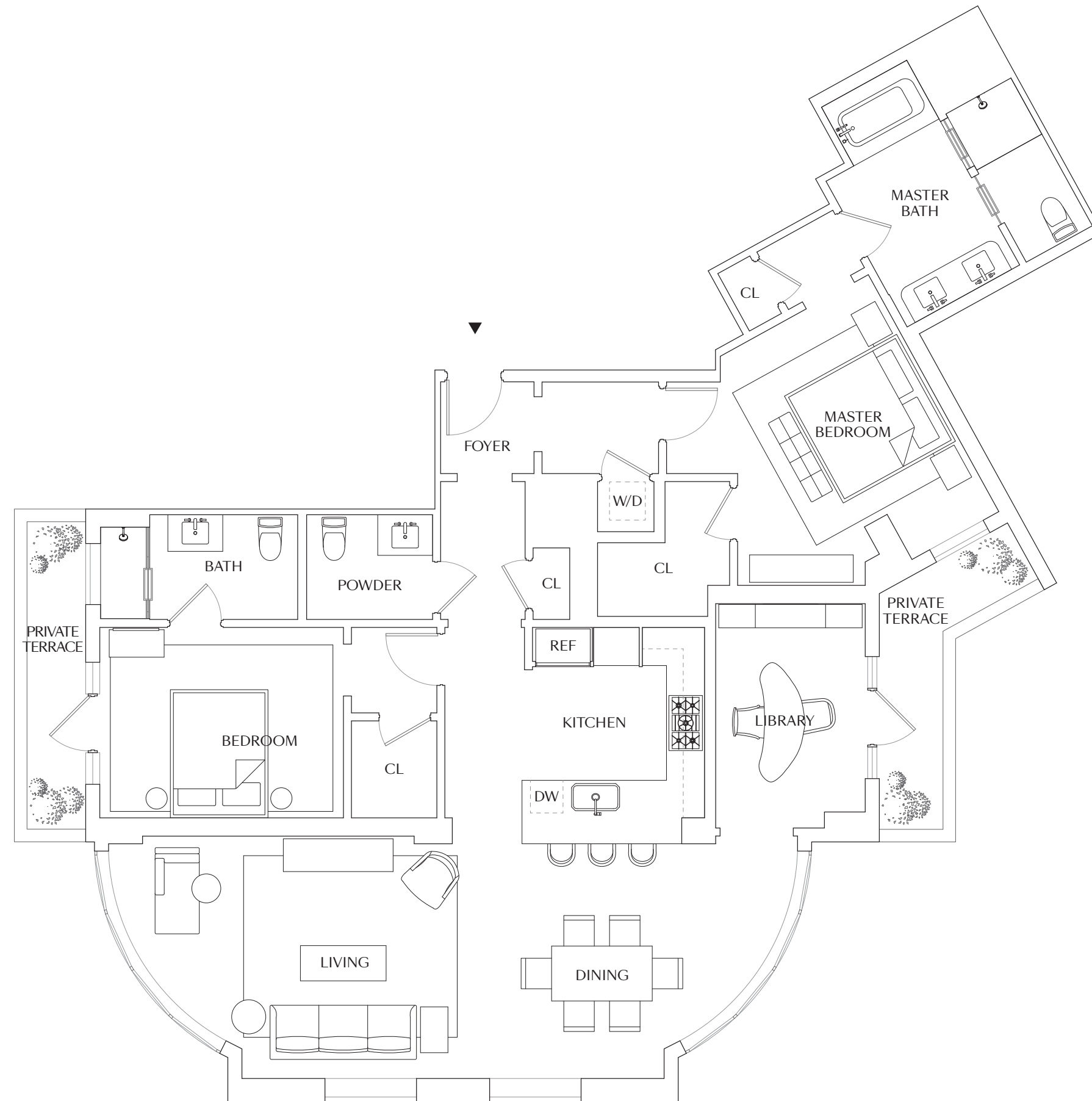
# CRESCENT

NOB HILL

## RESIDENCE 704

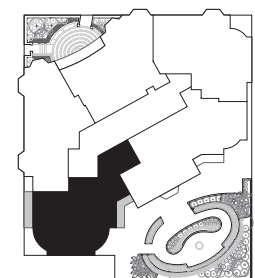
2 BEDROOMS | LIBRARY | 2 BATHROOMS

INTERIOR 1,576 SQ FT  
EXTERIOR 141 SQ FT



CALIFORNIA STREET

POWELL STREET



Scale 1/4" = 1'

